

Jesse Monroe
Sept. 20, 2017
Map Section: 6
Compartment: 47
Scale: 1 inch equals 0.25 miles

15-1741
Mowing
Homer Twp, Potter County

101 Acres

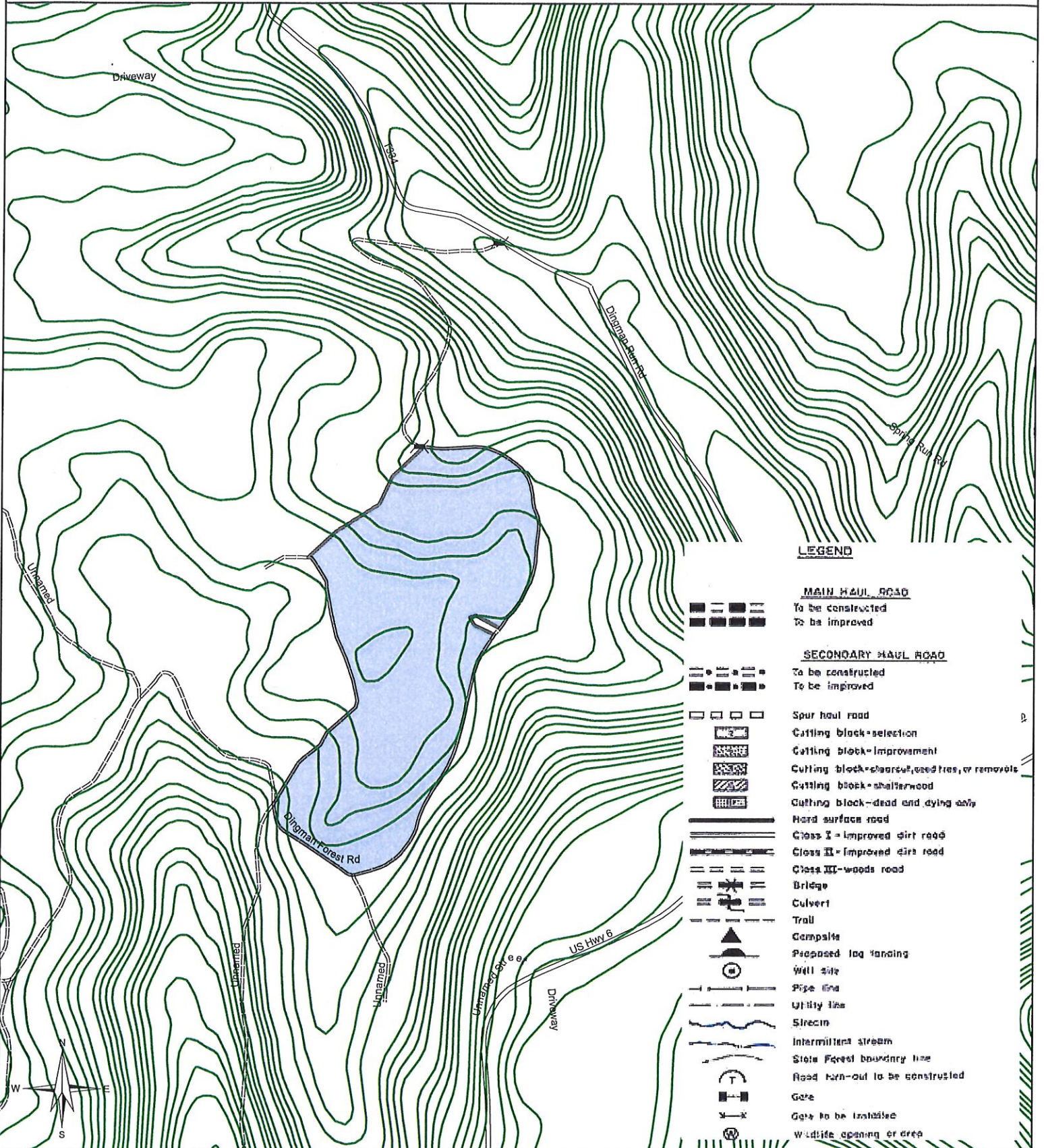


Copyright © 2013 National Geographic Society. All rights reserved.

Michael Cole
 September 22 2017
 Compartment: 31
 Scale: 1 inch equals 0.25 miles

SUSQUEHANNOCK STATE FOREST
 15-1746

144 ACRES
 Royer



LEGEND

- MAIN HAUL ROAD**
To be constructed
- To be improved
- SECONDARY HAUL ROAD**
To be constructed
- To be improved
- Spur haul road
- Cutting block-selection
- Cutting block-improvement
- Cutting block-clearcut, used trees, or removals
- Cutting block-shelterwood
- Cutting block-dead end dying only
- Hard surface road
- Class I - improved dirt road
- Class II - improved dirt road
- Class III - woods road
- Bridge
- Culvert
- Trail
- Campsite
- Proposed log landing
- Well site
- Pipe line
- Utility line
- Stream
- Intermittent stream
- State Forest boundary line
- Road turn-out to be constructed
- Gate
- Gate to be installed
- Wildlife opening or area

